

AiMC-3422

Micro Computer, Intel® Core™ i7/i5/i3 CPU, H110, 5 Expansions, 300W 80Plus PSU



Features

- Intel® 6th Generation Core i Processor with H110 Platform
 - Intel® 6th gen Core™ i7/i5/i3/Celeron CPU
 - *One PCIe x16 & one PCIe x1 & three PCI Expansion Slots
 - Compact, well-thought-out design
 - One internal 3.5" SATA HDD bays with shock-resistant
 - Optional front removable 2.5" HDD bay
 - VGA, 2 GbE LAN, 4 USB2.0, 2 COM
 - Easy-to-maintain system fan and reusable filter
 - Energy Savings
 - 300W 80Plus PSU
- * 3 PCI interface for AiMC-3422-01 model

Vertrieb durch



AMC – Analytik & Messtechnik GmbH Chemnitz

Heinrich-Lorenz-Str. 55 Tel.: +49/371/38888-0
 09120 Chemnitz Fax: +49/371/38888-99
 E-Mail: info@amc-systeme.de Web: www.amc-systeme.de

Specifications

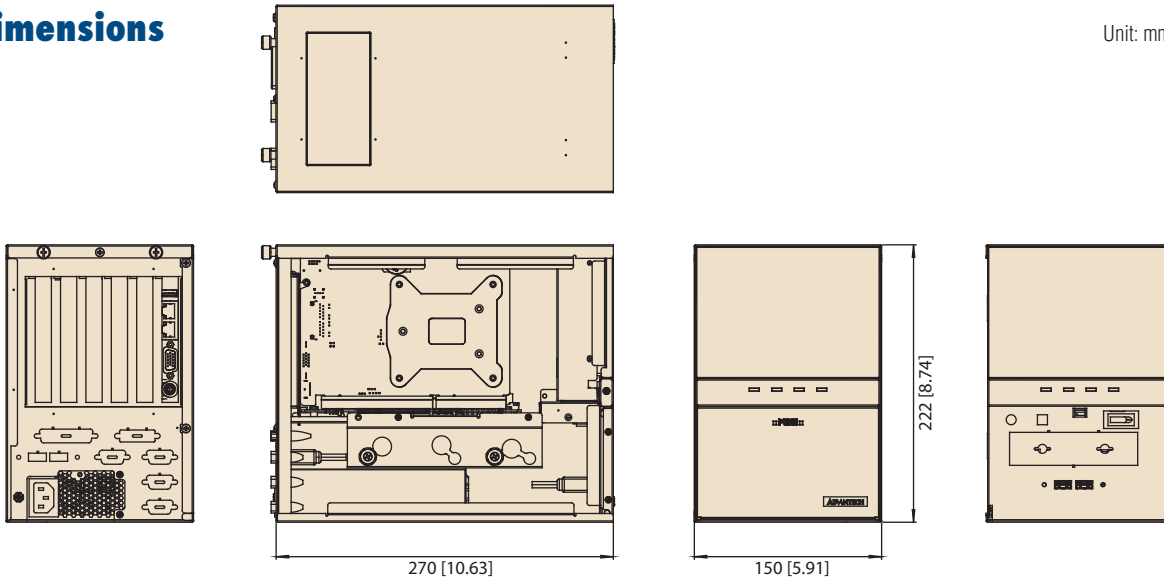
	CPU	i7-6700	i7-6700TE	i5-6500	i5-6500TE	i3-6100	i3-6100TE	G4400	G4400TE	G3900	G3900TE	
Processor System (0–40C for 65W CPU) (0–45C for 35W CPU)	Core	4	4	4	4	2	2	2	2	2	2	
	Base Frequency	3.4GHz	2.4GHz	3.2GHz	2.3GHz	3.7GHz	2.7GHz	3.3GHz	2.9GHz	2.8GHz	2.6GHz	
	L3 Cache	8M	8M	6M	6M	4M	4M	3M	3M	2M	2M	
	Chipset	H110										
BIOS	AMI 128Mb SPI Flash											
Memory	Technology	Dual Channel DDR4 1866/2133 MHz (non-ECC)										
	Max. Capacity	32 GB (16 GB per DIMM)										
	Socket	260-pin SO-DIMM x 2										
Graphics	Chipset Integrated	Integrated Intel HD Graphics										
	Interface	2x RJ 45, 10/100/1000 Mbps										
Ethernet	Controller	LAN 1: Intel I219V LAN 2: Intel I211AT										
	Expansion slot (AiMC-3422-00)	PCI Express x16	1 (Lower-layer slot); Full-Height: 107 mm / Length: Max. 180 mm									
Expansion slot (AiMC-3202-01)	PCI Express x1	2 (Lower-layer slot); Full-Height: 107 mm / Length: Max. 180 mm										
	PCI	2 (Lower-layer slot); Full-Height: 107 mm / Length: Max. 180 mm										
	PCI Express x16	1 (Lower-layer slot); Full-Height: 107 mm / Length: Max. 180 mm										
SATA	PCI Express x1	1 (Upper-layer slot); Full-Height: 107 mm / Length: Max. 180 mm										
	PCI	3 (Lower-layer slot); Full-Height: 107 mm / Length: Max. 180 mm										
	Max Data Transfer Rate	600 MB/s (SATA 3.0)										
I/O Interface	HDD Bay	1 internal 3.5"										
	Display	VGA+DVI-D (19200 x 1200 pixel @ 60Hz)										
	USB	3 USB 3.0; 2 front USB 2.0; 4 USB 2.0+C11										
	Serial	2 RS-232										
	PS/2	1										
Watchdog Timer	Output	System reset										
	Interval	Programmable 1 ~ 255 sec/min										
Power Supply	Output Rating	AC 300W, ATX										
	Input Voltage	100 V _{AC} ~ 240 V _{AC}										
Cooling	System Fan	1 (9cm/53CFM)										
	Air Fan	Yes										
Miscellaneous	Chassis intrusion alert	Yes										
	LED Indicators	Power, Fan, temperature, HDD										
	Control	Power on/off switch, Reset button										
Environment	Temperature	Operating 0 ~ 40 °C (32 ~ 104 °F)					Non-operating -20 ~ 60 °C (-4 ~ 140 °F)					
	Humidity	10-85% @ 40 °C non-condensing										
	Vibration	1Gms, random, 5 ~ 500 Hz, 3 axes, 1 hr/axis					2Gms, random, 5 ~ 500 Hz, 3 axes, 1 hr/axis					
	Shock	10G, half sine wave, 11ms duration										
	EMC	CE/FCC, CCC, BSMI										
	Safety	UL/CB, CCC, BSMI										
Physical Characteristics	Dimension (W x H x D)	150 x 222 x 270 mm										
	Weight	5 kg										



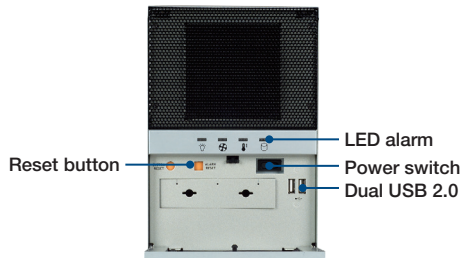
ADVANTECH iAutomation
Premier Partner

Dimensions

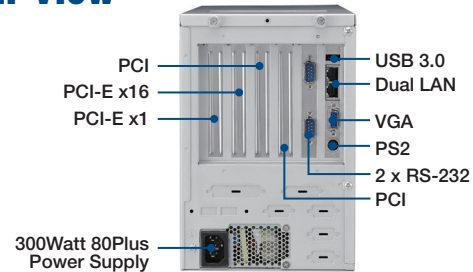
Unit: mm [inch]



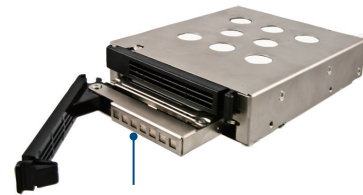
Front View



Rear View



IDT-3120E



Optional mobile rack for dual 2.5" SATA HDDs with a 3.5" drive bay occupancy

Ordering Information

Part Number	PCIe Exp x16	PCIe Exp x1	PCI Exp
AIMC-3422-00A1E	1	2	2
AIMC-3422-01A1E	1	1	3

Packing List

Items	Part Number	Quantity
AIMC-3422 Bare System	AIMC-3422-00A1E	1
Driver CD	2061302900	1
Four-port USB Cable	1700014398-11	1
LPT Cable	1700002223	1
MOUNTING BRACKET	1960048518N001	1
Rubber Foot	1990012452S000	4

Optional Accessories

Part Number	Description
1960053207N001	1.5U Cooler for All CPUs; Support 3 Expansion slots
1960053065N001	1U Cooler for CPU iX-XXXXTX and GXXXXXX; Support 4 Expansion slots
PCIE-1674PC-AE	4-port PCI express GbE PoE card
PCIE-1672PC-AE	2-port PCI express GbE PoE card
1700021831-01	DP to DVI-D cable w/ BKT
IDT-3120E	Removable dual 2.5" HDD tray
PCA-COM485-00A1E	4-port RS-485/422 Module by LPC
PCA-COM232-00A1E	4-port RS-232 Module by LPC
PCA-AUDIO-HDA1E	Audio extension module with HD audio interface
PCA-TPM-00A1E	Trusted platform module compliant with TCG 1.2

Note: Purchasing proprietary CPU cooler from Advantech is a must. Other brands' CPU coolers are NOT compatible.