

# PCM-34R1TP

1-Port Gigabit Ethernet,  
Intel® I225, 2.5Gb/s, IEEE 1588, TSN,  
1x RJ45, B+M key (3042, PCIe1)

NEW



## Features

- Meets Advantech iDoor technology standard
- Single 2.5GbE LAN Port (RJ45)
- M.2 3042 B+M Key compliant (PCI Express)
- PCIe Gen2 x1 bandwidth specification
- Supports Time Sensitive Network (TSN) (IEEE 1588) and PXE
- Compatible with embedded automation PC UNO-1/2/3/4 series
- Compliant with FCC/CE Class A Certification
- Operation temperature 0~60 degree support

Vertrieb durch



AMC – Analytik & Messtechnik GmbH Chemnitz

Heinrich-Lorenz-Str. 55 Tel.: +49/371/38388-0  
09120 Chemnitz Fax: +49/371/38388-99  
E-Mail: info@amc-systeme.de Web: www.amc-systeme.de

## Introduction

The PCM-34R series can enhance network performance, security, reliability, and provide more flexible network configuration options for specific application scenarios.

PCM-34R1TP supports TSN (Time Sensitive Networking), which is an update to the IEEE Ethernet standard intended to address the needs of control systems with standard Ethernet technology. Also, PCM-34R1TP features on supporting TSN that can be used in Audio/Video Bridging (AVB) applications and industrial applications that require TSN capabilities.

This is a flexible design that enables customers to customize their features with iDoor Technology.

## Specifications

### General

- Bus Type** M.2 3042 B+M Key compliant
- Interface** PCIe Express
- Connectors** 1 x RJ45 GbE Half-/Full-Duplex
- Certification** CE, FCC class A
- Dimensions** Module: 42 x 30 x 12.4 mm (1.65" x 1.18" x 0.49")  
I/O Plate: 81 x 19.35 x 41.5 mm (3.19" x 0.76" x 1.63")
- Power Consumption** Typical: +3.3V @ 2.2 W

### Communications

- LAN Controller** Intel® I225-IT Ethernet Chip
- Speed** 10/100/1000/2500 BASE-TX, Auto-negotiation
- Support** IEEE 1588

### Protection

- Isolation Protection** 1,500 V<sub>DC</sub>
- ESD Protection** 4KV (Contact), 8KV (Air)
- EFT Protection** 1,000 V
- Surge Protection** 1,000 V<sub>DC</sub>

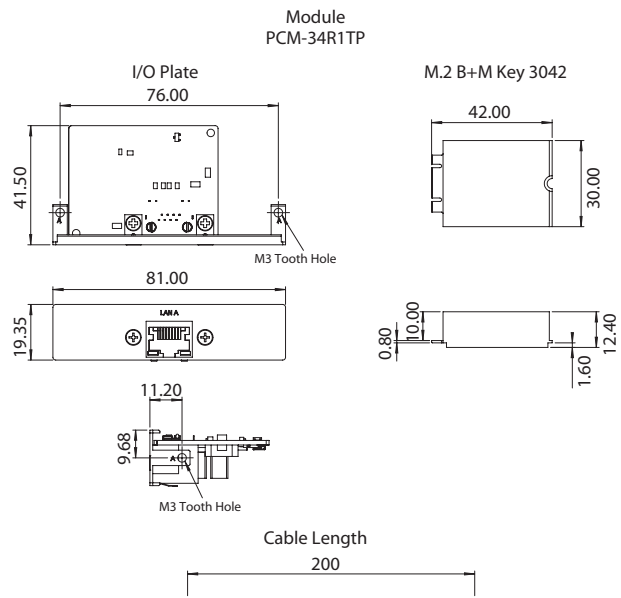
### Software

- OS Support** Microsoft® Windows® 10, Linux

### Environment

- Operating Humidity** 10 ~ 95% RH @ 40 °C/104 °F, non-condensing
- Operating Temperature** 0 ~ 60°C (32 ~ 140°F)
- Storage Temperature** -20 ~ 80°C (-4 ~ 176°F)

## Dimensions



## Ordering Information

- PCM-34R1TP-AE** 1-Port Gigabit Ethernet, Intel® I225, 2.5Gb/s, IEEE 1588, TSN, 1x RJ45, B+M key (3042, PCIe1)