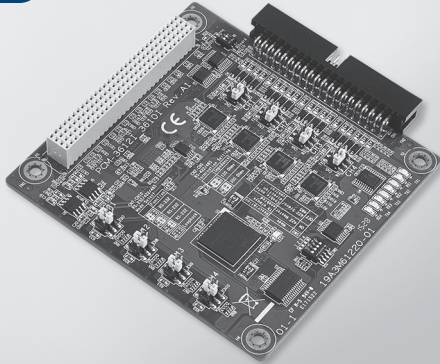


# PCM-3612I

## 4-port RS-232/422/485 PCI-104 Module

**NEW**



### Features

- Automatic RS-485 data flow control
- LED indicators: TX, RX
- Standard PC ports: COM1, COM2, COM3, COM4 compatible
- Supports Windows 7/8/10
- Supports Linux driver
- Powerful and easy-to-use utility (ICOM Tools)

### Specifications

#### General

- **Card Interface** PCI-104
- **Connectors** 1 x 40-pin header
- **Ports** 4
- **Power requirements** +3.3V @ 260 mA (Typical)  
+3.3V @ 530 mA (Max.)

#### Communications

- **Data Bits** 5, 6, 7, 8
- **Signals** RS-232: TxD, RxD, RTS, CTS, DTR, DSR, DCD, RI and GND  
RS-422: TxD+, TxD-, RxD+, RxD-, GND, CTS+, CTS-, RTS+  
and RTSRS-  
485: Data+, Data- and GND
- **Parity** None, Even, or Odd
- **Speed** 50 bps ~ 921.6 kbps
- **Stop Bits** 1, 1.5, 2
- **Termination Resistor** 120  $\Omega$  & 300  $\Omega$

#### Environment

- **Operating Humidity** 0 ~ 90 % RH
- **Operating Temperature** -40 ~ 85°C (-40 ~ 185°F)
- **Storage Temperature** -40 ~ 85°C (-40 ~ 185°F)

### Ordering Information

- **PCM-3612I-AE** 4-port RS-232/422/485 PCI-104 Module

Vertrieb durch



**AMC – Analytik & Messtechnik GmbH Chemnitz**

Heinrich-Lorenz-Str. 55 Tel.: +49/371/38388-0  
09120 Chemnitz Fax: +49/371/38388-99  
E-Mail: info@amc-systeme.de Web: www.amc-systeme.de